



Summercrest

Senior Living Community



Welcome



Since 1998 Summercrest has provided the Dartmouth-Lake Sunapee region with quality senior housing options with eighty-one independent living, assisted living and memory care apartments. Over the years we have learned a lot about what our residents want. Basically, it's what we all want - more choices, great value and quality services!

Summercrest offers the very best in senior living with beautiful apartments, common spaces and amenities including:

- Café and Market with all-day service
- Activities room
- Game room
- Reception and information desk
- Outdoor patio and seating area
- Sun-filled solarium
- Individual storage units
- Shared living arrangement options for great economic value

Life is Good Here



Life is Good Here

Situated in a residential neighborhood in Newport, New Hampshire, life at Summercrest is about making the most of each day. Count on us to handle the chores so you can focus on what's enjoyable.

Our residents enjoy a comfortable, independent lifestyle to the best of their ability. Residents are encouraged to bring their own furnishings and decorate their apartments as they wish, and guests are always welcome, so family and friends are regular visitors at Summercrest. Our dining services team works to bring you fresh and local foods for three meals a day, and you can always stop by our Café/Market to socialize, have a snack or a meal – it's open all day!

If your needs change, you can count on us to provide the care you require. One feature our residents **LOVE** is that they can stay at Summercrest - often the very same apartment - if they need additional care. We know how important that can be to some individuals and we do our absolute best to accommodate this when possible.

Whether it's Independent Living, Assisted Living or Memory Care - you can count on us.

Our History



Summercrest was founded in 1996 by local Newport businessmen – Joe Davidson, Bill Hoyt, George Kelley, John McCrillis, Ed Rochford, Sam Saggiotes and Vern Violette, along with Valley Regional Healthcare. Summercrest opened in 1998 and offered 36 apartments with services provided by home health agencies. Many greater Newport area seniors were now able to find supportive housing locally, and enjoy Summercrest’s inviting living spaces including a well-stocked library, activity room, dining room, sunrooms and hair salon, while also participating in many social activities.



Managed by Grand Senior Living, Summercrest added The Seasons memory care program in 2008. Today, after our second expansion in 2020, we now offer accommodations for a total of 78 residents, 60 independent and assisted living apartments and 18 in our memory care assisted living program.

For over two decades Summercrest has maintained high resident satisfaction and a reputation for quality care and services. Our long-tenured leadership team and caring staff have created a welcoming environment with relations between staff and residents being that of extended family.

Today, Summercrest remains locally owned and privately operated in partnership with Steve Gunnerson, Hospital Hill Realty, Grand Senior Living and Valley Regional Healthcare. The future success of Summercrest continues to look bright and as Vern Violette says:

“The key to our success is no secret. It’s being part of the community and serving the needs of the people in it.”

Independent Living



The independent living program is designed for people who seek the services, amenities and social benefits of living in a senior community, but do not require the personal care needs of assisted living.

Independent Living Services

- One meal per day in our restaurant-style dining room or café/market
- Weekly housekeeping
- Planned social, cultural and recreational activities
- Scheduled local transportation

Apartment and Community Features

- | | |
|--|--|
| • Select apartments with full kitchen | • All utilities |
| • Kitchenettes with sink, fridge and microwave | • Cable television |
| • Walk in showers in each bathroom w/safety bars | • Individually controlled thermostats |
| • Washers/dryers on each floor | • Building and grounds maintenance & landscaping |
| • Individual storage unit | • Mini blinds on every window |

Services Available for an Additional Fee:

- | | |
|-----------------------------------|---|
| • Beauty and barber services | • Nursing assessment and other clinical needs |
| • Special transportation services | • Laundry services |
| • Additional meals | • Lifeline personal emergency response system |

Assisted Living

The assisted living program at Summercrest is designed to maximize independence and quality of life by providing residents comprehensive services and support.

Residents have their choice of a private or semi-private apartment along with the benefits and amenities of living in a senior living community.



Assisted Living Services

- Three meals a day
- Up to 45 minutes/day of personal care assistance
- Medication management and nursing oversight
- Weekly housekeeping & laundry
- Planned social, and recreational activities
- Scheduled local transportation
- Pharmacy delivery service

Apartment and Community Features

- Select apartments with full kitchen
- Kitchenettes with sink, fridge and microwave
- Walk in showers in each bathroom w/safety bars
- All utilities
- Cable television
- Lifeline personal emergency response system
- Individually controlled thermostats
- Building and grounds maintenance & landscaping
- Mini blinds on every window
- Washers/dryers on each floor
- Individual storage unit

Services Available for an Additional Fee:

- Tray service and/or special diets (at physician's request)
- Beauty and barber services
- Special transportation services
- Additional personal care services

Residents in need of Financial Assistance

Choices For Independence (CFI) is a Medicaid waiver program run by the New Hampshire Department of Health and is designed to provide home care as an alternative to nursing facility care. Under the CFI program, individuals or couples 62 or older may live at Summercrest provided they meet the medical and financial criteria of this program.

Memory Care

Memory care is much more than assisted living. It provides a complete environment specifically planned to provide comfort, security and enjoyment to those with memory loss.

The Seasons at Summercrest utilizes an intentional design and programs to engage residents and maximize quality of life in a respectful environment. Our approach also provides much needed peace of mind for families of our residents.



The Seasons Memory Care Program Includes:

- Three meals a day plus snacks
- An individualized care plan for daily personal care
- A secure setting
- Individualized programs and therapeutic activities available 24 hours a day
- On-site Registered Nurse/Health Services Director
- Up to 120 minutes/day of direct personal care
- 24-hour staffing by specially trained and compassionate caregivers
- Housekeeping and personal laundry services
- Medication management
- Spa bathing in a walk-in Jacuzzi tub
- A secure outdoor “Paradise Garden”
- All utilities including cable television

Services Available for an Additional Fee:

- Tray service and/or special diets (at physician’s request)
- Beauty and barber services
- Special transportation services
- Incontinence supplies program

Schedule of Fees



Independent Living Program

Shared Suite	\$3,930
Studio	\$5,165 - \$5,615
One Bedroom	\$5,615 - \$6,290
Two Bedroom	\$6,850 - \$7,380
Second Occupant	\$1,000

Memory Care Program

Private Studio	\$10,110
Semi-Private	\$7,860
Additional Personal Care*	\$500

**120 minutes per day of 1:1 personal care included in base fee, additional care is an extra 15 min/day*

Respite Program

Respite Care – Independent Living	\$190/day
Respite Care – Assisted Living	\$255/day
Respite Care – Memory Care	\$345/day

Assisted Living Program

Shared Suite	\$5,275
Studio	\$6,400 - \$6,960
One Bedroom	\$7,300 - \$7,970
Two Bedroom	\$8,695 - \$9,230
Second Occupant	\$1,675
Additional Personal Care*	\$500

**45 minutes per day of 1:1 personal care is included in base fee, additional care is an extra 15 min/day.*

Choices for Independence Program (CFI)*

CFI Studio Rent	\$747-\$1,300
Meal plan/person in CFI Program	\$460-\$495
Total monthly cost for CFI Resident	\$1,207 - \$1,795

**This program has a limited number of available apartments. All rates are based on an individual's level of income according to Housing and Urban Development (HUD) annual guidelines and New Hampshire Housing Finance Authority policies.*

Admission Fee: \$500 one-time (not applicable for CFI)

The rates listed above are 2023 rates. Actual rates may vary slightly depending upon specific unit selected. Except for CFI Rates, Summercrest management reserves the right to make changes to fees and rates when necessary. Summercrest is a rental community. There are no buy-in or entrance fees. A fully refundable \$500 Reservation Deposit will hold an apartment for up to two business days or may be used as a Wait List Deposit. Upon move-in, this deposit becomes a one-time Admission Fee.

Cost Comparison

Are you wondering if you can afford to live at Summercrest? This will help you compare the expenses of living in your own home with the expenses of living at Summercrest.

	Avg. Monthly Budget for One Person	Your Current Budget Expenses	SUMMERCREST
HOUSING:			
Rent or mortgage payment	\$1,200.00	_____	monthly fee
Building insurance	\$60.00	_____	included
Tenant's insurance (belongings, etc)	\$30.00	_____	_____
Utilities:			
Heat/A/C	\$145.00	_____	included
Electricity/Gas	\$120.00	_____	included
Water / Sewer	\$120.00	_____	included
HOME MAINTENANCE:			
General maintenance & servicing	\$60.00	_____	included
Major repairs & replacement	\$90.00	_____	included
Trash collection, yard care, snow removal	\$175.00	_____	included
Housecleaning & linen laundering weekly	\$120.00	_____	included
Redecoration & replacement	\$30.00	_____	included
TAXES:			
Real estate	\$350.00	_____	included
Other		_____	_____
FOOD (3 meals/day):	\$700.00	_____	included
PERSONAL CARE:			
Care required for short & long-term illnesses	\$600.00	_____	included*
TRANSPORTATION:			
Car Payment	\$350.00	_____	available
Car Maintenance (gas, repairs, insurance)	\$240.00	_____	_____
ENTERTAINMENT & RECREATION:	\$120.00	_____	_____
OTHER PERSONAL EXPENSES:	\$120.00	_____	_____
<hr/>			
TOTAL:	\$4,630.00	_____	_____

*Personal Care includes: 45 minutes/day for Assisted Living residents and 120 minutes/day for Memory Care residents



Address: 169 Summer St., Newport, NH 03773
Phone: 603-863-8181 **Email:** info@summercrest.net
Website: www.summercrest.net



How to Become a Resident

Quick Checklist

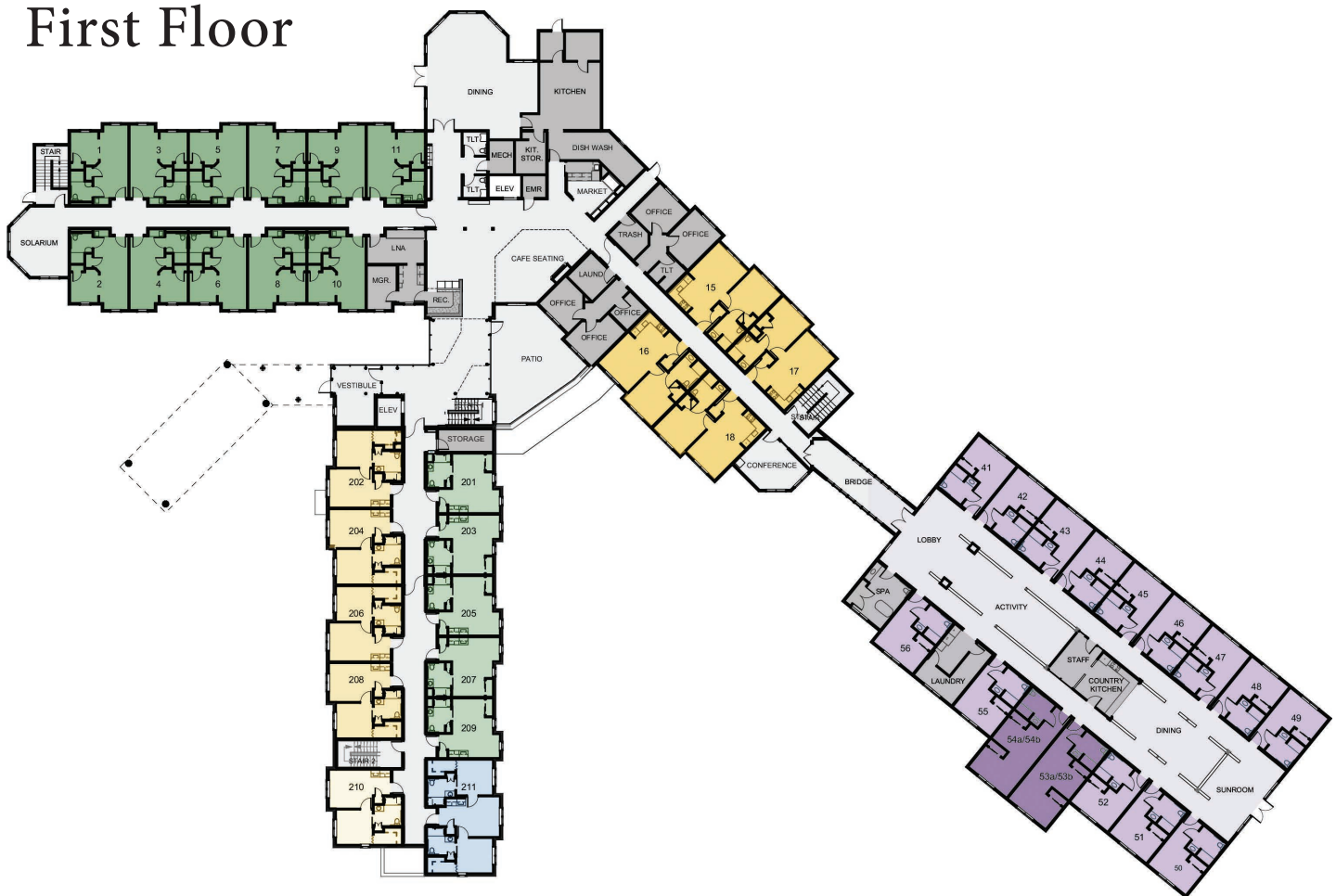
- ☐ Contact our Sales & Marketing Director at (603) 863-8181 to arrange for a visit.
- ☐ Obtain a Priority Number by completing the Reservation Agreement, General Information form, and submitting a fully refundable deposit of \$500.00. At this time your unit choice may be reserved, and a tentative move-in date scheduled.
- ☐ Complete the Application for Residency packet, including Financial and Medical Information forms. (Contact our office.)
- ☐ Sign and submit the Release for Medical Information form to your health care provider.
- ☐ Make an appointment with your health provider for a physician assessment. A physician assessment must be done within 30 days prior to admission for Summercrest and within 12 months for The Seasons Memory Care.
- ☐ Our Health Services Director will make an appointment with you to complete the Resident Assessment Tool.
- ☐ Review our Residency Agreement and Resident Handbook and write down any questions.
- ☐ Upon financial and medical approval, set up an appointment with the Sales & Marketing Director to sign the Residency Agreement. At this time the security deposit and first month's rent are due.



Welcome to Summercrest!

Floor Plans

First Floor

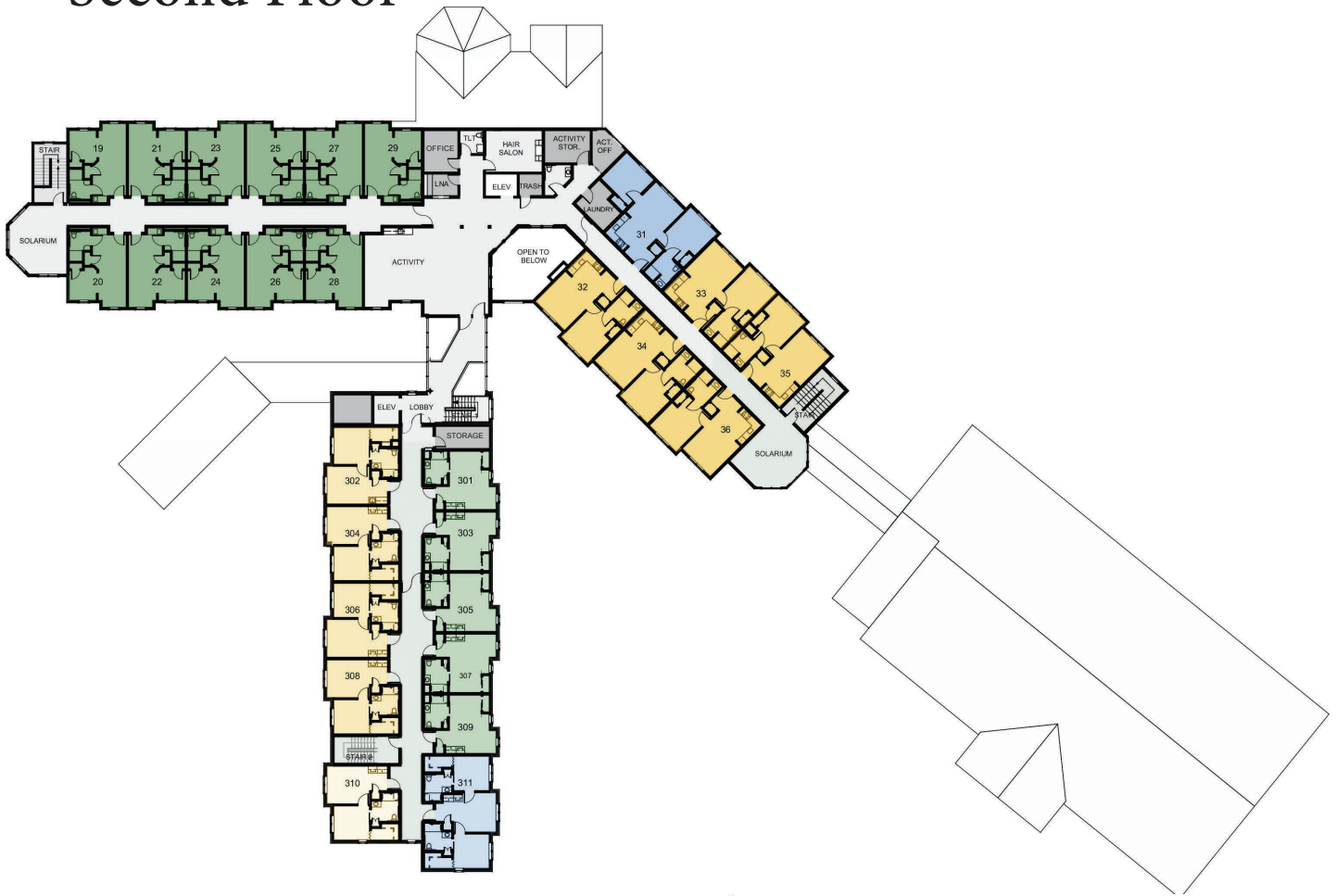


Legend

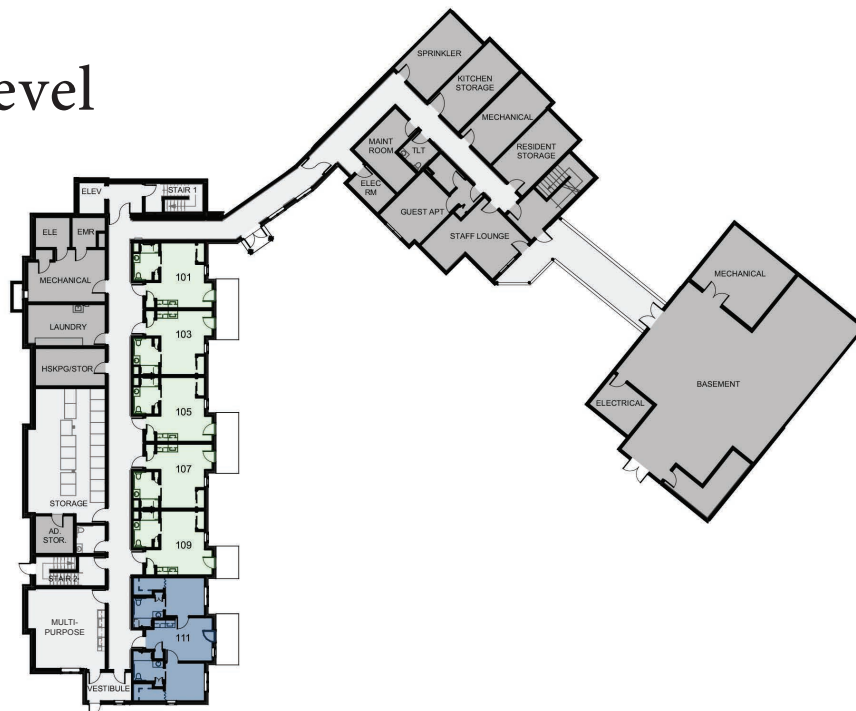
 Studio Deluxe	 2-Bedroom
 Garden Studio	 Garden 2-Bedroom
 Studio	 2-Bedroom Corner
 1-Bedroom Deluxe	 Memory Care Private Studio
 1-Bedroom	 Memory Care Semi Private Studio
 1-Bedroom Corner	 Common Areas
	 Support

Floor Plans

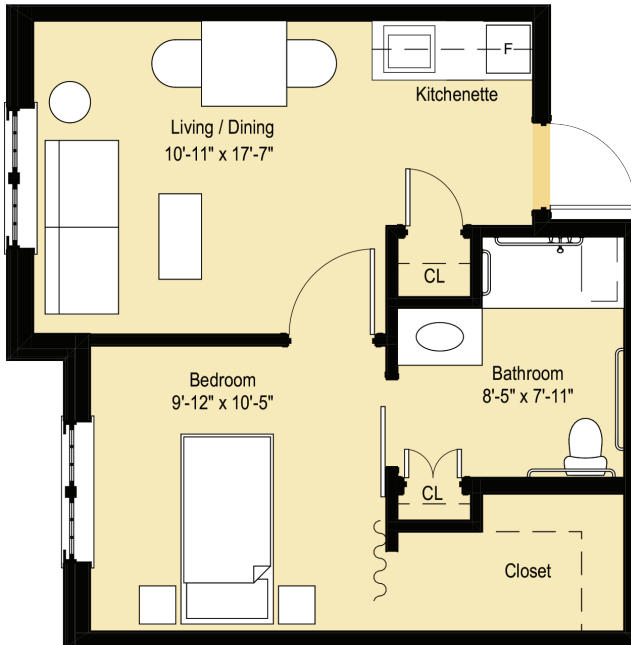
Second Floor



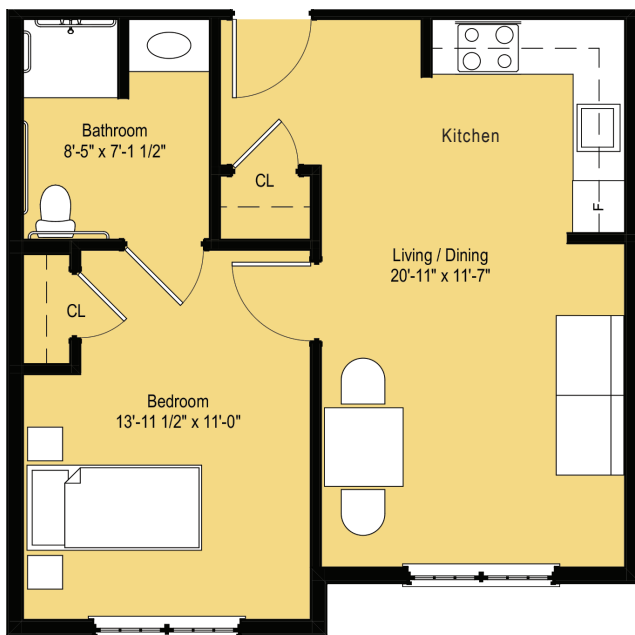
Garden Level



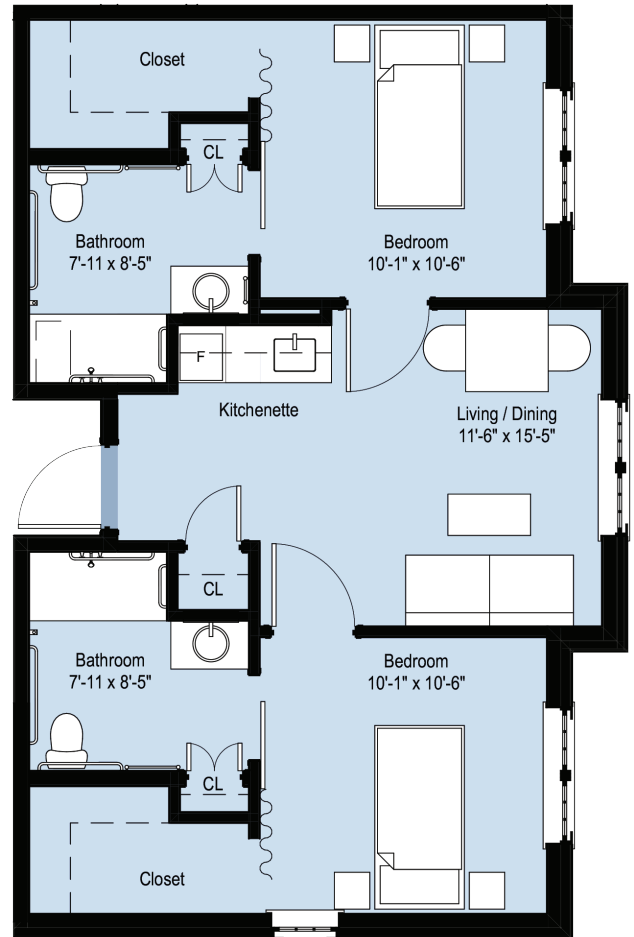
1 and 2 Bedroom Apartments



1-Bedroom
400 square feet

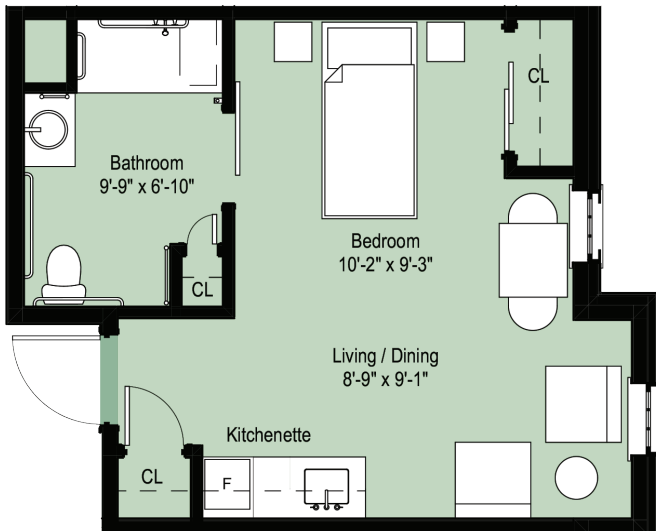


1-Bedroom Deluxe
510 square feet

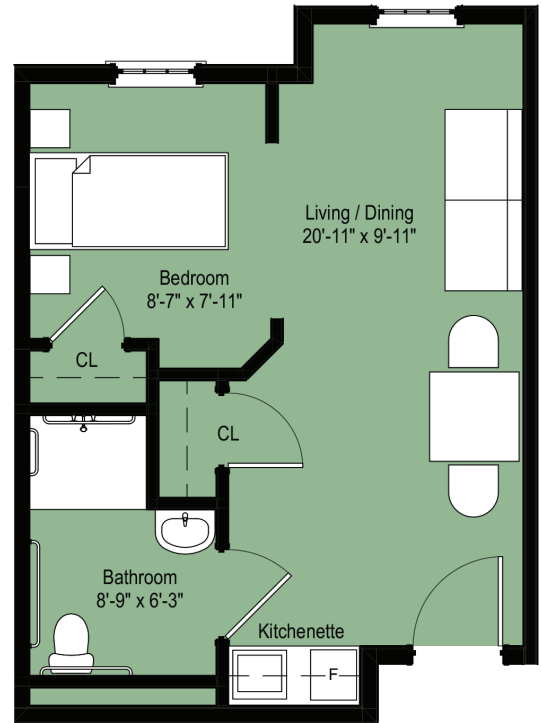


2-Bedroom Corner
615 square feet

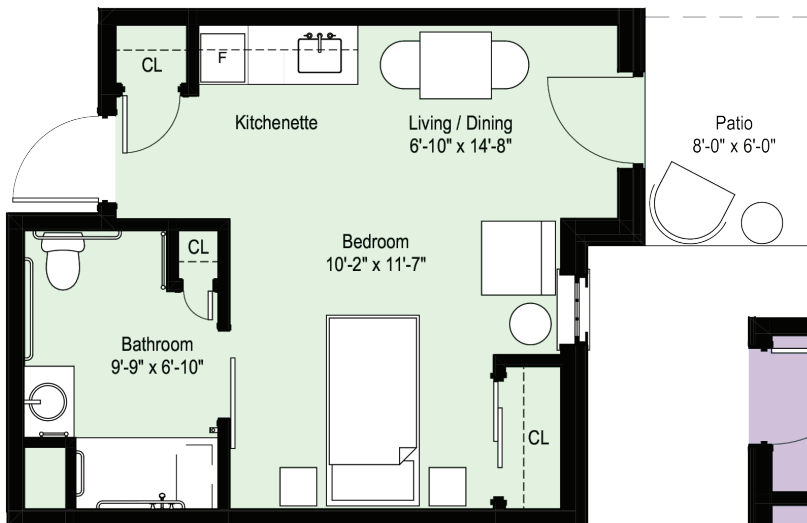
Studio Apartments



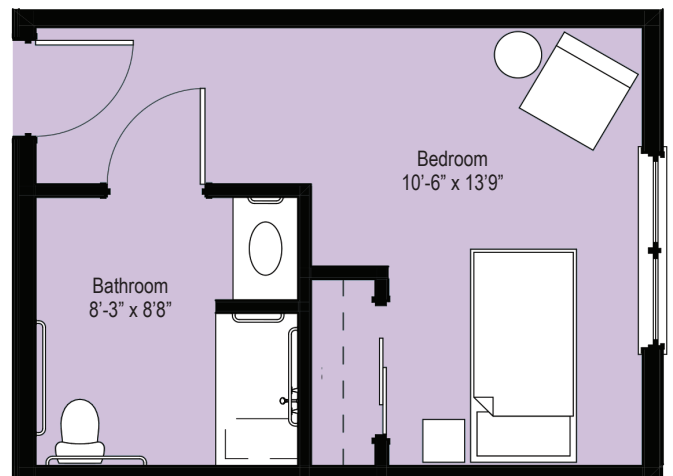
Studio
310 square feet



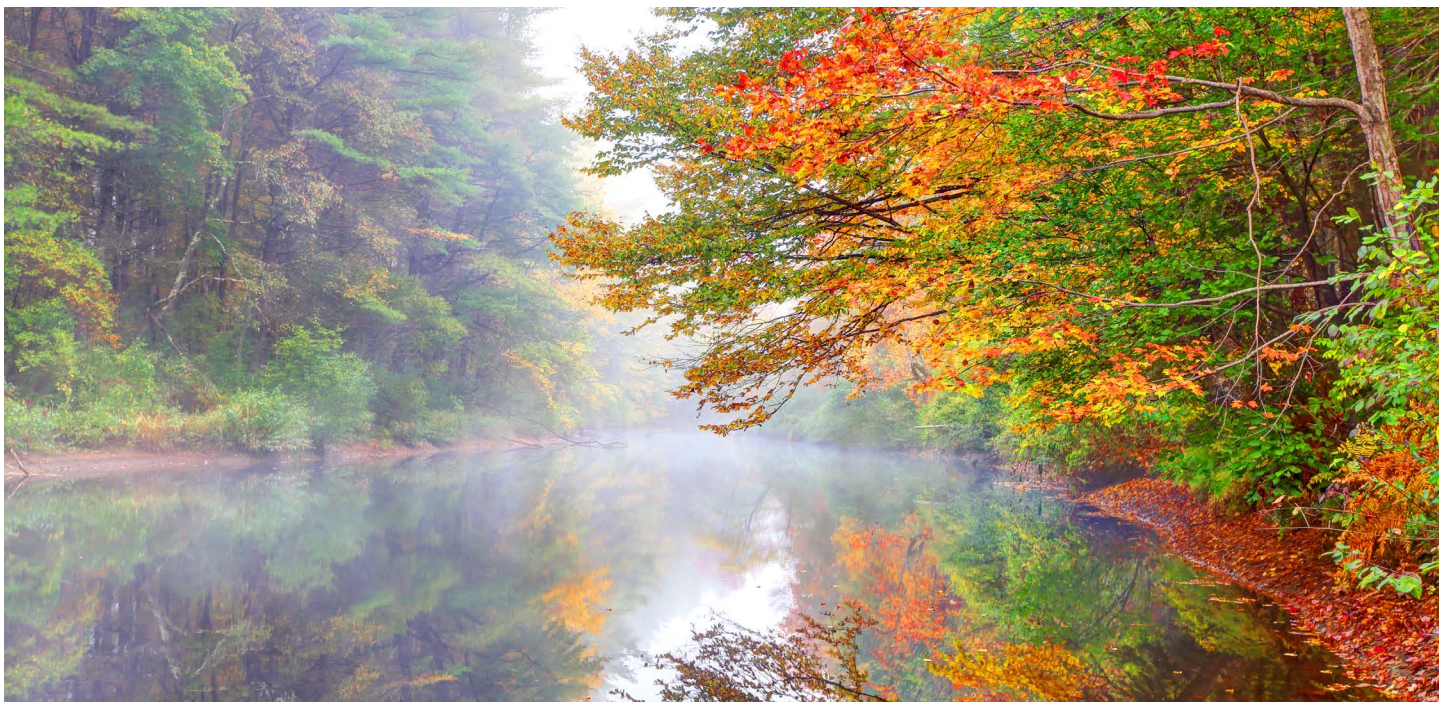
Studio Deluxe
350 square feet



Garden Studio
315 square feet



Memory Care Private Studio
260 square feet



We'd Love to Welcome You!

Come for a visit and see why our residents **LOVE** living here!
Contact us to set up an appointment:



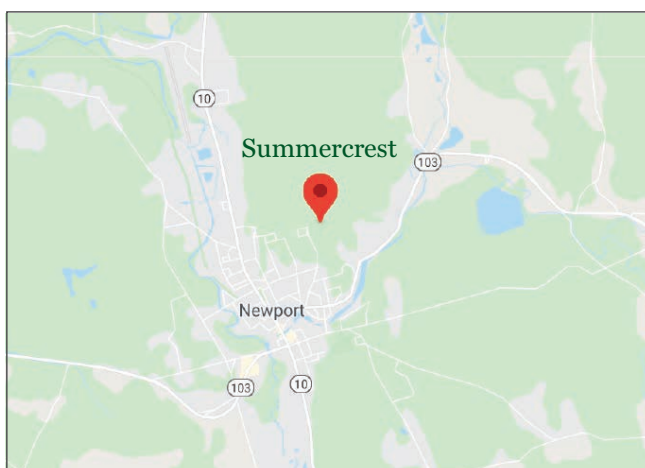
(603) 863-8181



info@summercrest.net



www.summercrest.net




Summercrest
Senior Living Community

**169 Summer St.
Newport, NH 03773**